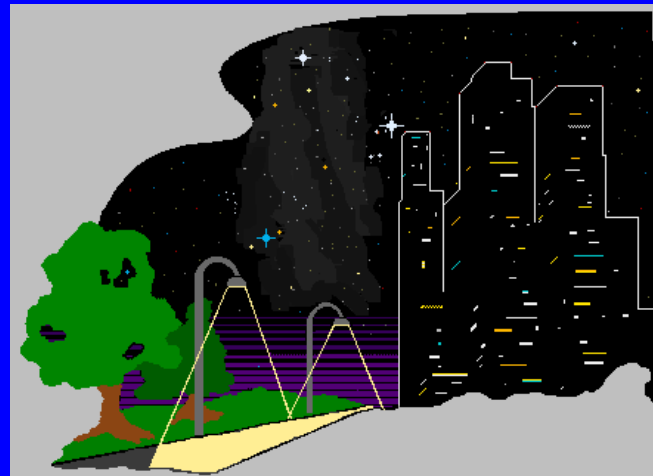




Galileo Award

Friedel Pas

European Liaison Officer International Dark-Sky Association



8th European Symposium for protection of the Night Sky
Vienna, Austria
22-23 August 2008



Galileo Award

- Once a year
- To a European IDA member
- By the European Executive Committee.
- For outstanding work in battle against Light Pollution.
- Select group:
 - Diego Bonata, Fabio Falchi, René Kobler, Bob Mizon, Pierantonio Cinzano





This year

- Candidate was nominated by several persons.
- Voting was unanimous.

(pictures in the background copyrighted by the winner of the award)





Swindon 36km

Leigh Delamere 8km

Chippenham 9km

Hale Bopp
200,000,000km

Scientific Research

- Modeling sky glow of different types of luminaires.
 - Works more then 3 years on it to perfectioning it
 - Shows effect on long and short distances in several environments (city, campaign)
 - Reflection
 - Different types of lamps

Melksham 13km

Trowbridge 16km

Bath 12km

1997 March 31st 22hrs UT Canon fisheye 7.5mm f5.6 5mins Fujicolor Super



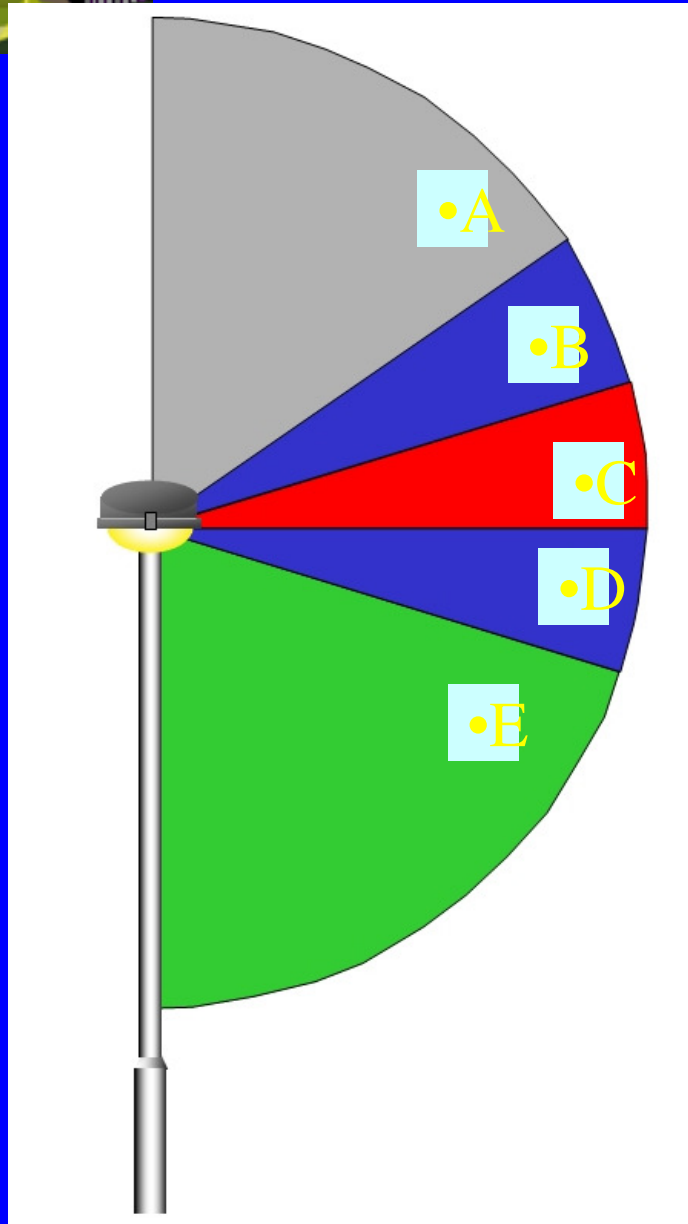


Diagram to show relative impact of a luminaire's output with regards to contribution to skyglow.

- A 180-100° Critical area for skyglow from within urban areas but proportionally less impact to rural areas.
- B 100-95° Significant contributor to skyglow, especially in rural areas where it is most aerosol dependent. Less likely to be obstructed.
- C 99-90° Critical zone for skyglow and obtrusion seen at 10s of km (in rural areas) where it is strongly dependent on aerosol scattering.
- D 90-70° Significant contributor to skyglow seen at a distance through reflection but reflected light more likely to be obstructed by buildings, trees and topography.
- E 70-0° Ideal light distribution.



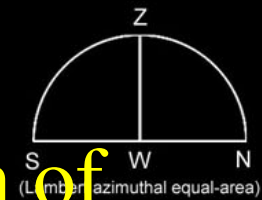
Ambassador

2002/4/10 ~20:30UT

51° 48' N 2° 04' W

Mosaic of
12 x 15 sec. exposures. (unguided)
Casio QV-3500EX digital camera
14 mm f.l. f/2
(ISO 500 equivalent)

- Publicized in booklet by ILE (Institution of Lighting Engineers)
- Adopted by IDA and IESNA for MLO (Model Luminance Ordinance)
- Included in educational courses of ILE for existing and prospective lighting designers.



Campaigning

- ± 20 years campaigning as committee member of CfDS
- Tireless Technical Advisor
- Gaining allies to our cause, and in convincing local and national government that more action is needed.
- With a calm and warm personality



All Dark-Sky movements

need members who can appeal to the emotions and principles of the public in order to convince them that action is necessary: but without a solid technical basis and real 'know-how', our emotional arguments are the poorer.





And the 2008 winner is:



Christopher Baddiley